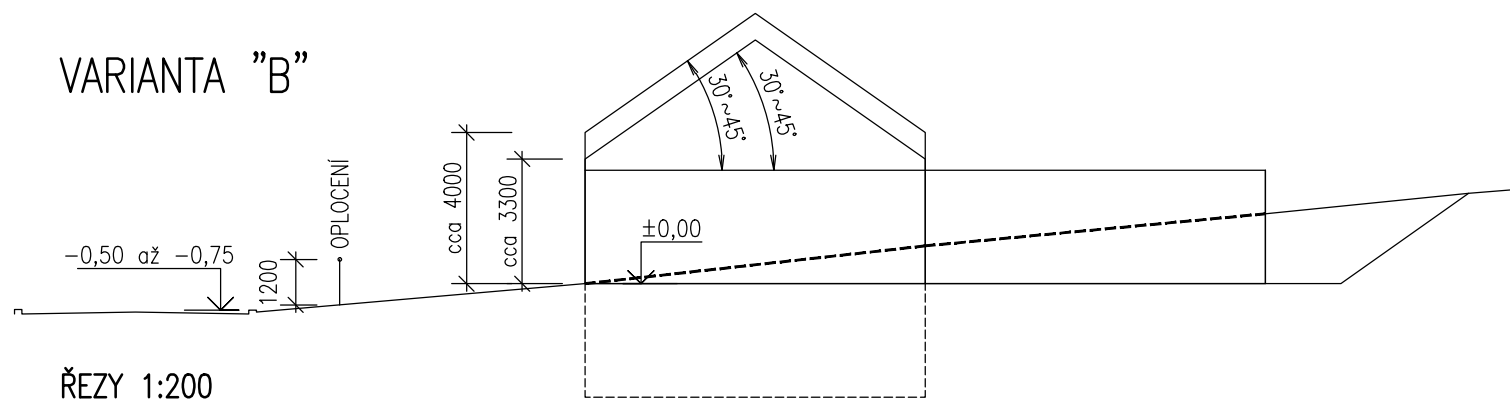
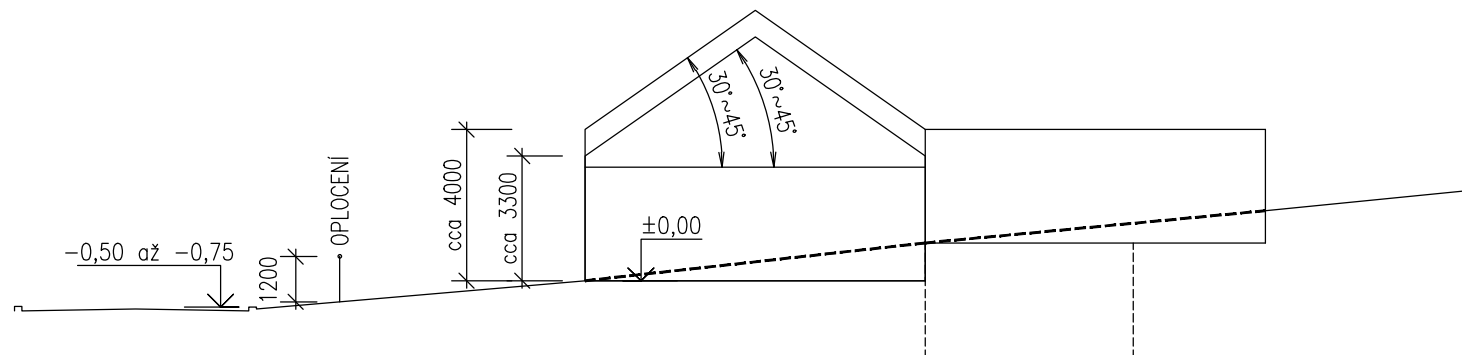


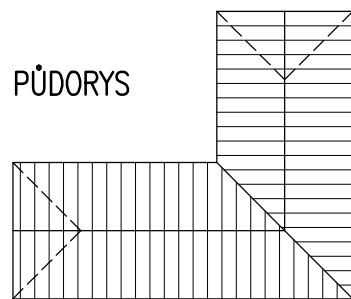
VARIANTA "B"



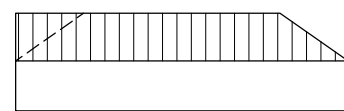
ŘEZY 1:200



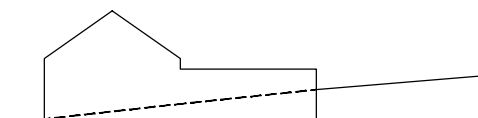
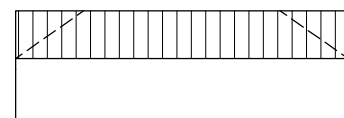
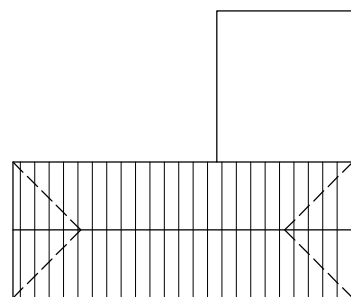
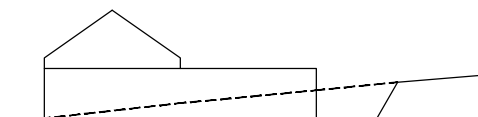
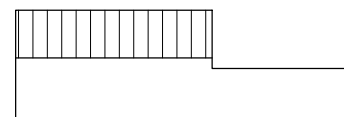
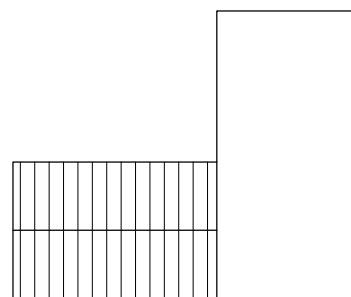
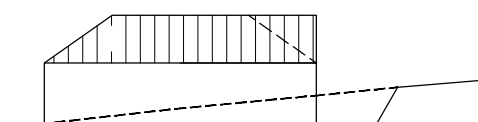
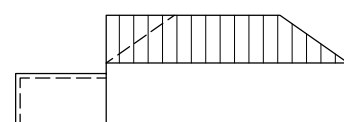
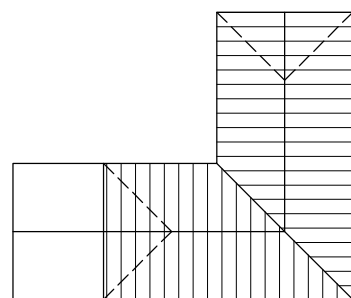
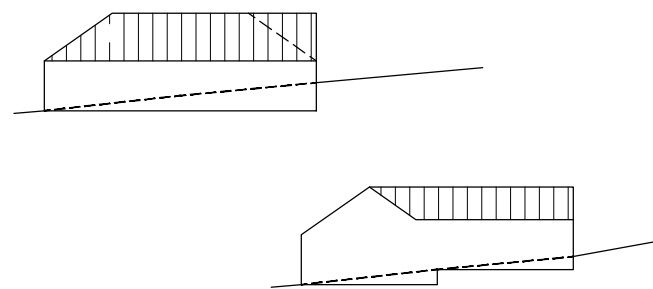
PŮDORYS



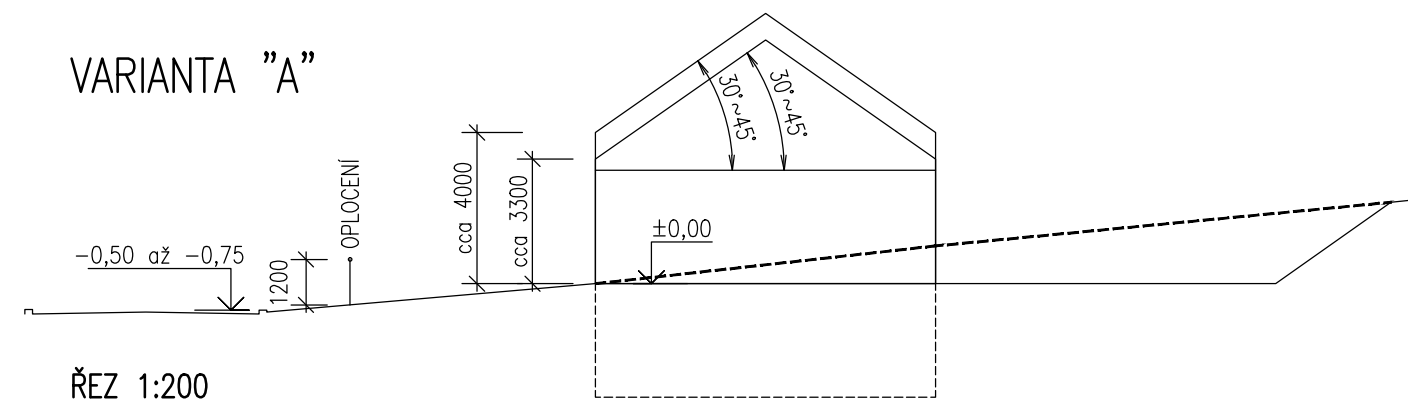
ULIČNÍ POHLED



VÝCHODNÍ POHLED

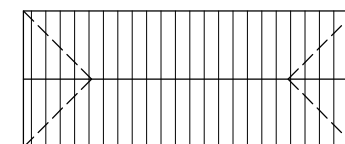


VARIANTA "A"

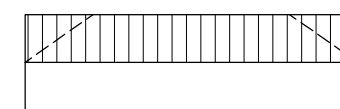


ŘEZ 1:200

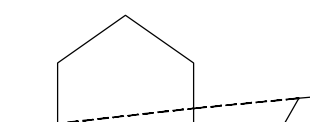
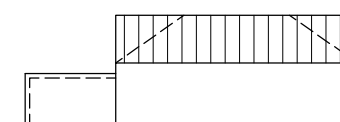
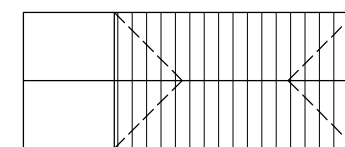
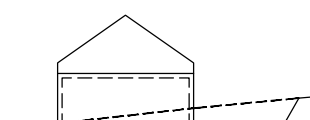
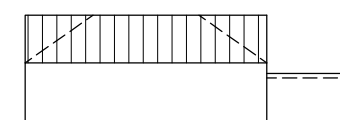
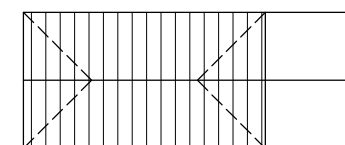
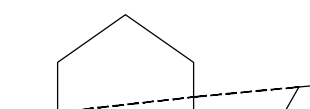
PŮDORYS



ULIČNÍ POHLED



VÝCHODNÍ POHLED



ÚZEMNÍ STUDIE SLOPNÉ – LOKALITA BI 1 – JIHOZÁPAD  
UPŘESNĚNÍ REGULATIVŮ ZÁSTAVBY POZEMKŮ 1 – 6

ZPRACOVATEL: ING. ARCH. DAGMAR NOVÁ, VODNÍ 453, 760 01 ZLÍN

ŘEZY, SCHÉMATA – VARIANTY "A", "B"

STUPEŇ  
DATUM

MĚŘÍTKO

Č.V.

ÚZEMNÍ STUDIE  
07 / 2020

1:200; 1:500

03